

DEVELOPING ADVERSARY ENGAGEMENT EXPERTISE

Developing your team is vital to achieving operational outcomes when conducting an adversary engagement operation. A Mission Essential Task List (METL) is a structure to identify training requirements and qualifications, establish a team purpose, and drive progress to accomplish your goals.

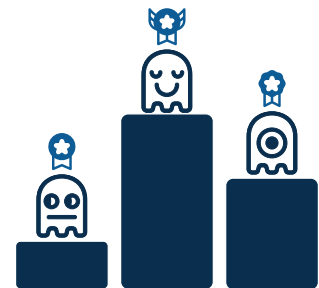
THE MISSION ESSENTIAL TASK LIST

The METL concept used by the MITRE Engage™ team has been adapted from the process used by much larger teams across the U.S. Government.

The METL is made up of a series of Mission Essential Tasks (METs). These tasks are the core activities that must be completed during the planning, execution, or analysis phases of an engagement operation. While not everyone is expected to be an expert at every MET, each team member is expected to be able to accomplish each MET.

Some adversary engagement activities require significantly more specialized skills than others, such as malware analysis and decoder authoring. Therefore, you will never have 100% knowledge of all skills across all the team. However, METs ensure that, where possible, team members are trained to be proficient in all core competencies.

By reviewing your team's collective and individual ability to accomplish each MET at a satisfactory level, you can identify your own strengths and weaknesses. This knowledge should inform your training plan. In this way, the METL provides the foundation for your team's training plan. A training plan selects one or more METs and allocates time and resources to train to that task. By following your training plan, you can ensure that your team is developing skills in the areas most critical for operational success



A METL helps you identify core operational tasking to expedite and focus your team's training.

Nick Nathans, MITRE Engage Operations Lead



engage@mitre.org



engage.mitre.org



@ MITRE Engage

MITRE's mission-driven teams are dedicated to solving problems for a safer world. Through our public-private partnerships and federally funded R&D centers, we work across government and in partnership with industry to tackle challenges to the safety, stability, and well-being of our nation.